

# Lightsource Test Report (1/2)

## Product Information

Product Category: WL64-90

Product Number: 4

## CIE Colorimetric Parameters

Chromaticity coordinates:  $x=0.3130$   $y=0.3252$   $u(u')=0.1995$   $v=0.3109$   $v'(v)=0.4663$

CCT:  $T_c=6516K$  ( $duv=0.00104$ )

Color Ratio:  $R=0.124$   $G=0.839$   $B=0.037$

Peak Wavelength: 447.4nm

Half Bandwidth: 21.9nm

Dominant Wavelength: 486.4nm

Color Purity: 0.075

CRI:  $R_a=71.7$ ,  $avgR(1\sim14)=62.8$ ,  $avgR(1\sim15)=63.1$

TM30:  $R_f=71$ ,  $R_g=95$

$R1=71$

$R2=74$

$R3=73$

$R4=74$

$R5=72$

$R6=65$

$R7=80$

$R8=64$

$R9=0$

$R10=36$

$R11=72$

$R12=42$

$R13=71$

$R14=85$

$R15=68$

Color Quality Scale:  $Q_a=70.5$ ,  $Q_f=68.7$ ,  $Q_p=75.2$ ,  $Q_g=91.0$

$Q1=82$

$Q2=91$

$Q3=61$

$Q4=55$

$Q5=68$

$Q6=73$

$Q7=77$

$Q8=87$

$Q9=87$

$Q10=69$

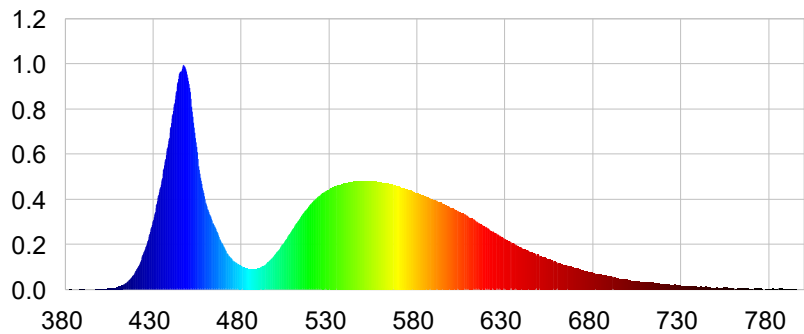
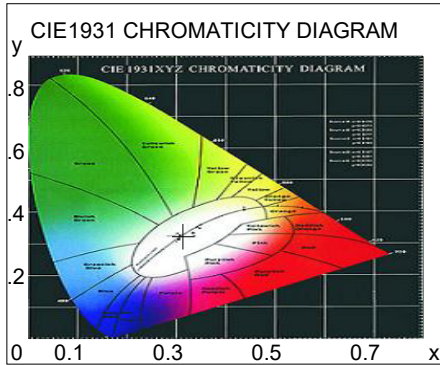
$Q11=64$

$Q12=67$

$Q13=71$

$Q14=61$

$Q15=70$



## Photometric Parameters

Effective Lumen: 5605.09 lm

Efficiency: 92.60 lm/W

Radiant Power: 17.746 W

EEL: 0.15

Energy Efficiency Class: A+ (EU 874-2012)

Pupil Flux: 9612.35 Plm

Pupil Lumens Per Watt: 158.80 Plm/W

Pupil Factor ( $K_p$ ): 1.715

Cirtpic Flux: 20492.42 lm

Mesopic Flux (CIE R.): 7333.38 lm ( $L_p=0.100$  cd/m<sup>2</sup>,  $S/P=2.00$ )

Mesopic Flux (USP): 8610.38 lm ( $L_p=0.100$  cd/m<sup>2</sup>,  $S/P=2.00$ )

Mesopic Flux (MOVE): 7625.11 lm ( $L_p=0.100$  cd/m<sup>2</sup>,  $S/P=2.00$ )

## Electric Parameters

Voltage: 13.500V

Current: 4.4838A

Effective Power: 60.53W

Power Factor: 1.0000

Frequency: 0.00Hz

## Test Information

Scan Range: 380~800:1nm

Stabilization Time: 0 Min

Max of Signal: 56502 (1758)

Photometric Method: sphere-spectroradiometer

Photometric Condition: Sphere diameter: 1.50m, 4°

CCD Integration Time: 101.02 ms

Condition:  $T_x=17.3^\circ C$ ,  $T_i=17.1^\circ C$ , R.H.:60%

Test Lab:

Operator:

Test Device: Inventfine CMS-2S (Plus)

Test Time: 2024-02-29 18:00:12

Inspector:

---

## Lightsource Test Report (2/2)

### Product Information

Product Category: WL64-90

Product Number: 4

WL(nm)	PL	PE(mW/nm)	WL(nm)	PL	PE(mW/nm)	WL(nm)	PL	PE(mW/nm)
380	0.0027	0.5321	525	0.4212	83.7525	670	0.0977	19.4199
385	0.0024	0.4719	530	0.4473	88.9460	675	0.0868	17.2603
390	0.0044	0.8812	535	0.4660	92.6647	680	0.0776	15.4223
395	0.0032	0.6334	540	0.4745	94.3505	685	0.0691	13.7312
400	0.0036	0.7100	545	0.4801	95.4625	690	0.0603	11.9996
405	0.0060	1.1881	550	0.4828	95.9968	695	0.0515	10.2493
410	0.0147	2.9313	555	0.4824	95.9121	700	0.0461	9.1684
415	0.0358	7.1119	560	0.4783	95.1098	705	0.0403	8.0066
420	0.0827	16.4451	565	0.4693	93.3107	710	0.0344	6.8348
425	0.1743	34.6547	570	0.4583	91.1205	715	0.0317	6.2957
430	0.3118	61.9935	575	0.4463	88.7398	720	0.0258	5.1322
435	0.4940	98.2316	580	0.4286	85.2146	725	0.0225	4.4836
440	0.7227	143.6886	585	0.4144	82.3913	730	0.0214	4.2607
445	0.9628	191.4429	590	0.3990	79.3420	735	0.0172	3.4266
450	0.9294	184.7952	595	0.3827	76.0875	740	0.0131	2.6126
455	0.6136	121.9997	600	0.3645	72.4686	745	0.0151	3.0025
460	0.3888	77.3025	605	0.3458	68.7594	750	0.0141	2.7995
465	0.2837	56.4082	610	0.3229	64.2061	755	0.0118	2.3421
470	0.1965	39.0648	615	0.3005	59.7475	760	0.0087	1.7199
475	0.1354	26.9250	620	0.2775	55.1821	765	0.0084	1.6703
480	0.1080	21.4779	625	0.2530	50.3049	770	0.0050	1.0029
485	0.0933	18.5480	630	0.2276	45.2550	775	0.0061	1.2127
490	0.0983	19.5386	635	0.2076	41.2760	780	0.0038	0.7541
495	0.1225	24.3495	640	0.1862	37.0285	785	0.0032	0.6429
500	0.1658	32.9757	645	0.1702	33.8374	790	0.0059	1.1682
505	0.2205	43.8475	650	0.1519	30.2125	795	0.0039	0.7713
510	0.2803	55.7351	655	0.1371	27.2526	800	0.0016	0.3151
515	0.3365	66.9147	660	0.1219	24.2410			
520	0.3842	76.3957	665	0.1113	22.1389			

---

Condition: Tx:17.3°C, Ti:17.1°C, R.H.:60%  
Test Lab:  
Operator:

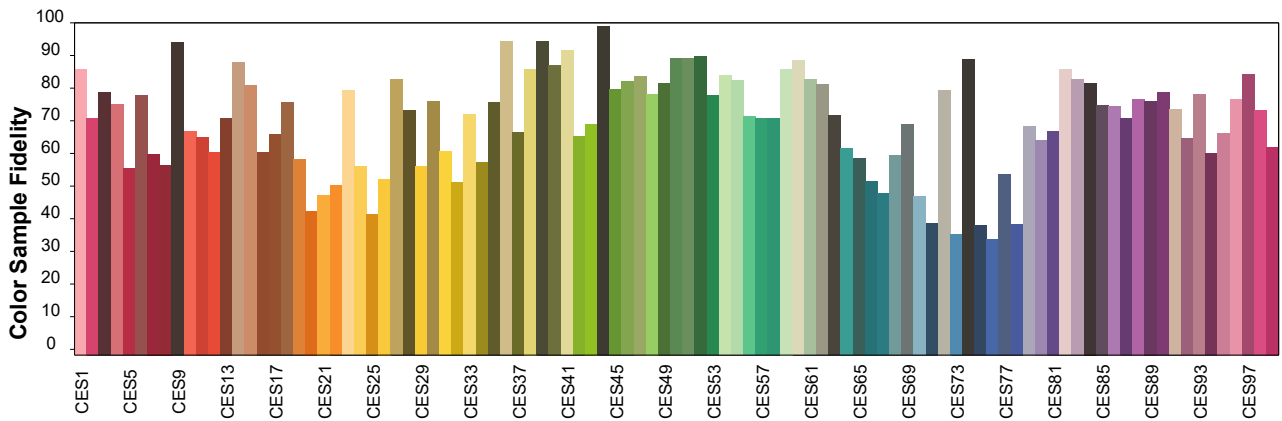
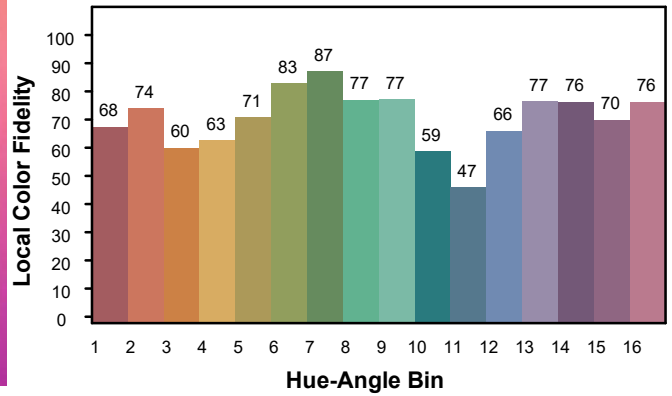
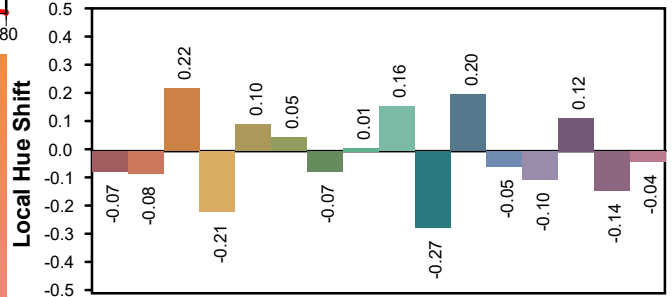
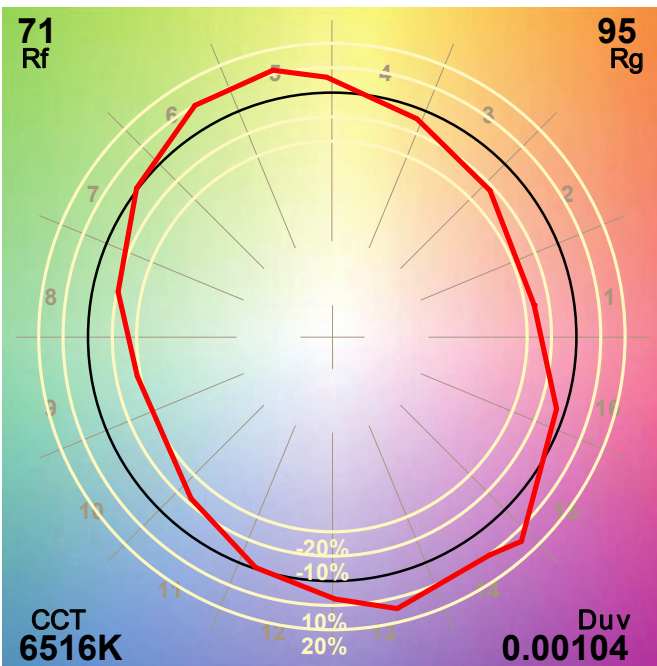
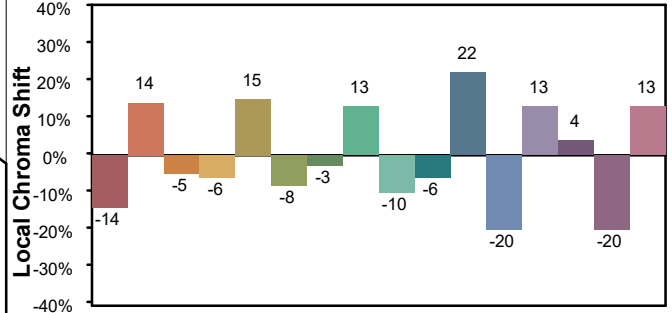
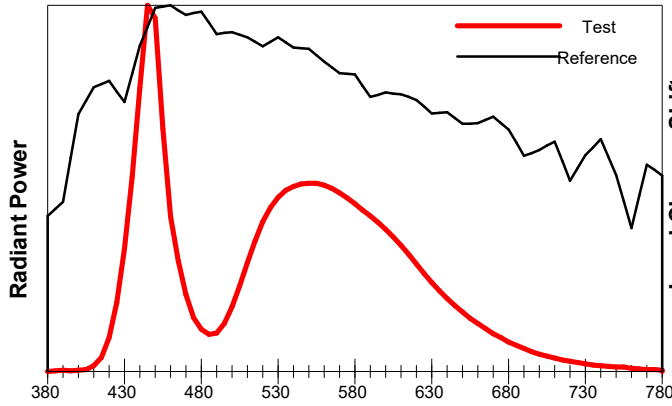
Test Device: Inventfine CMS-2S (Plus)  
Test Time: 2024-02-29 18:00:12  
Inspector:

# IES TM-30-18 Color Rendition Report

## Product Information

Product Category: WL64-90

Product Number: 4



Condition: Tx:17.3°C, Ti:17.1°C, R.H.:60%  
 Test Lab:  
 Operator:

Test Device: Inventfine CMS-2S (Plus)  
 Test Time: 2024-02-29 18:00:12  
 Inspector: