

## Lightsource Test Report (1/2)

### Product Information

Product Category: SL1-1

Product Number: 131

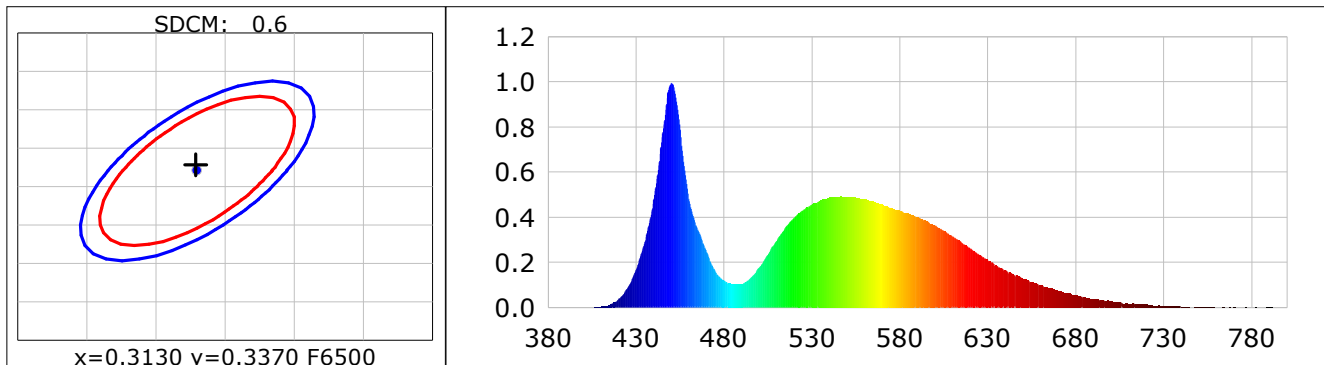
### CIE Colorimetric Parameters

Chromaticity coordinates:  $x=0.3129$   $y=0.3378$   $u(u')=0.1947$   $v=0.3153$   $v'=0.4730$   
 CCT:  $T_c=6434K$  ( $duv=0.00754$ ) Color Ratio:  $R=0.117$   $G=0.843$   $B=0.039$   
 Peak Wavelength: 450.1nm Half Bandwidth: 19.4nm  
 Dominant Wavelength: 494.5nm Color Purity: 0.066  
 CRI:  $R_a=71.1$  TM30:  $R_f=73$ ,  $R_g=92$

R1 =68	R2 =75	R3 =79	R4 =71	R5 =69	R6 =66	R7 =82	R8 =58
R9 =-39	R10=40	R11=67	R12=38	R13=69	R14=88	R15=63	

Color Quality Scale:  $Q_a=70.9$ ,  $Q_f=70.4$ ,  $Q_p=72.8$ ,  $Q_g=87.1$

Q1 =80	Q2 =95	Q3 =65	Q4 =57	Q5 =67	Q6 =71	Q7 =76	Q8 =85
Q9 =91	Q10=74	Q11=69	Q12=70	Q13=72	Q14=57	Q15=66	



### Photometric Parameters

Luminous Flux: 2053.97 lm  
 EEI: 0.13

Efficiency: 105.05 lm/W  
 Energy Efficiency Class: A+ (EU 874-2012)

Radiant Power: 6.176 W

### Electric Parameters

Voltage: 13.501V  
 Power Factor: 1.0000

Current: 1.4482A  
 Frequency: 0.00Hz

Power: 19.55W

### Test Information

Scan Range: 380~800:1nm  
 Stabilization Time: 0 Sec  
 Max of Signal: 46026 (2743)

Photometric Method: sphere-spectroradiometer  
 Photometric Condition: Sphere diameter: 1.50m, 4T  
 CCD Integration Time: 179.69 ms

## Lightsource Test Report (2/2)

**Product Information**

Product Category: SL1-1

Product Number: 131

WL(nm)	PL	PE(mW/nm)	WL(nm)	PL	PE(mW/nm)	WL(nm)	PL	PE(mW/nm)
380	0.0006	0.0397	525	0.4346	31.2224	670	0.0789	5.6698
385	0.0003	0.0205	530	0.4604	33.0712	675	0.0660	4.7419
390	0.0012	0.0831	535	0.4776	34.3063	680	0.0561	4.0268
395	0.0010	0.0750	540	0.4890	35.1265	685	0.0463	3.3248
400	0.0017	0.1256	545	0.4922	35.3569	690	0.0411	2.9533
405	0.0022	0.1583	550	0.4933	35.4354	695	0.0364	2.6179
410	0.0064	0.4597	555	0.4895	35.1634	700	0.0299	2.1448
415	0.0161	1.1564	560	0.4822	34.6362	705	0.0264	1.8998
420	0.0401	2.8787	565	0.4712	33.8481	710	0.0199	1.4275
425	0.0906	6.5094	570	0.4578	32.8900	715	0.0178	1.2791
430	0.1744	12.5283	575	0.4446	31.9381	720	0.0150	1.0774
435	0.3004	21.5779	580	0.4314	30.9893	725	0.0099	0.7106
440	0.4840	34.7690	585	0.4175	29.9939	730	0.0077	0.5509
445	0.7789	55.9535	590	0.4034	28.9801	735	0.0071	0.5100
450	1.0000	71.8368	595	0.3862	27.7447	740	0.0045	0.3211
455	0.7922	56.9084	600	0.3665	26.3310	745	0.0041	0.2960
460	0.4877	35.0371	605	0.3426	24.6089	750	0.0047	0.3407
465	0.3512	25.2268	610	0.3195	22.9493	755	0.0048	0.3483
470	0.2507	18.0079	615	0.2936	21.0888	760	0.0027	0.1955
475	0.1642	11.7958	620	0.2649	19.0323	765	0.0041	0.2923
480	0.1225	8.8011	625	0.2372	17.0362	770	0.0058	0.4157
485	0.1058	7.5993	630	0.2132	15.3122	775	0.0022	0.1591
490	0.1068	7.6730	635	0.1875	13.4680	780	0.0005	0.0350
495	0.1332	9.5704	640	0.1688	12.1266	785	0.0000	0.0030
500	0.1810	12.9997	645	0.1492	10.7171	790	0.0057	0.4077
505	0.2399	17.2364	650	0.1310	9.4088	795	0.0009	0.0649
510	0.3035	21.8013	655	0.1160	8.3351	800	0.0030	0.2174
515	0.3592	25.8018	660	0.1013	7.2776			
520	0.4013	28.8302	665	0.0895	6.4260			

Condition: Tx:33.3'C, Ti:0.0'C, R.H.:60%  
 Test Lab: Optical Engineering Department  
 Operator: Chen

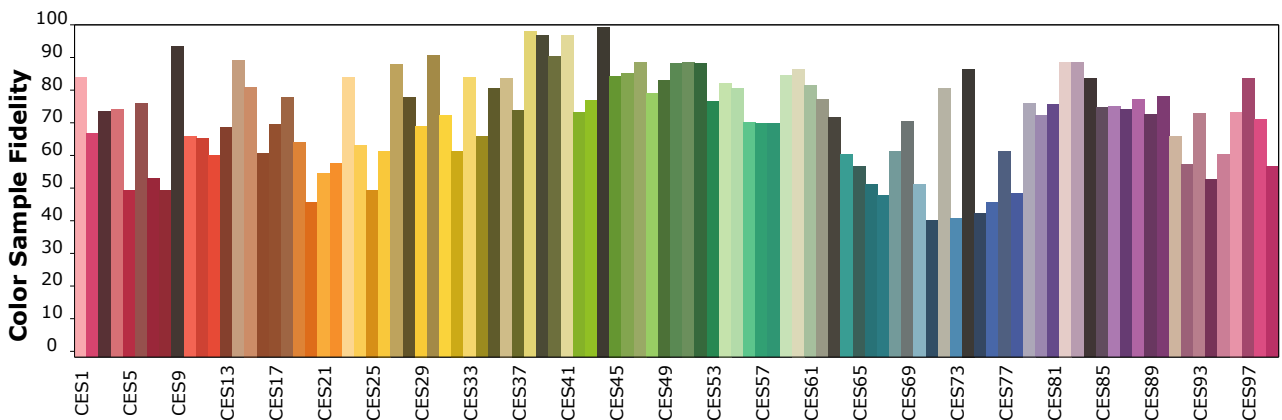
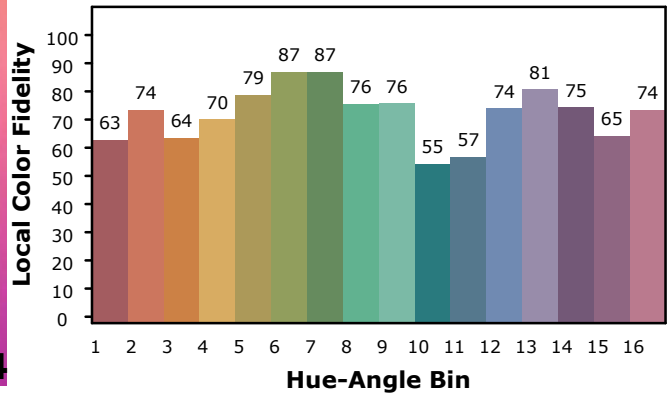
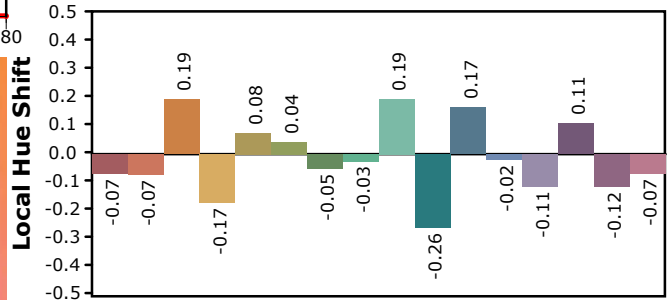
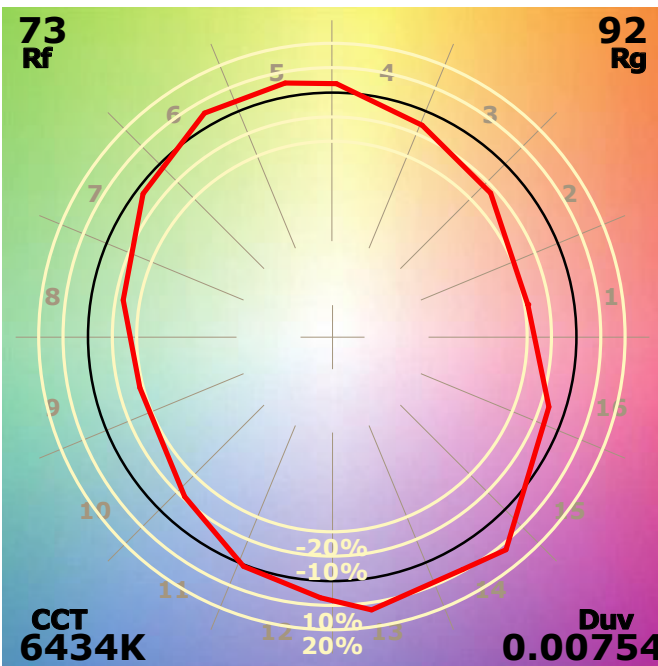
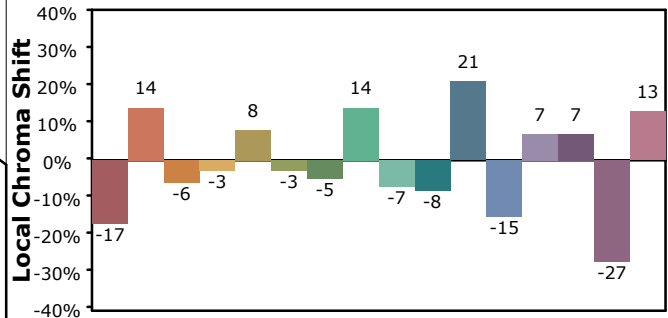
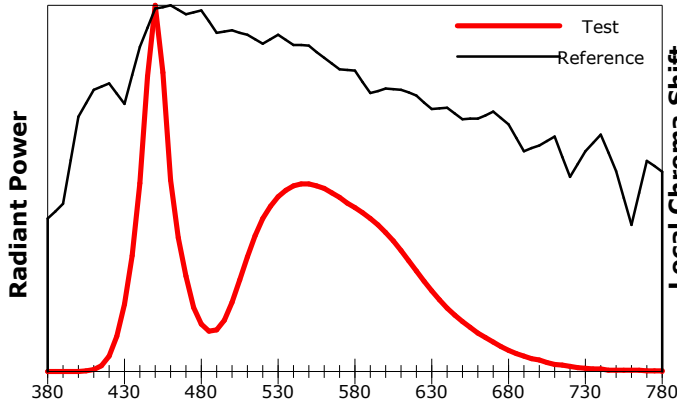
Test Device: Inventfine CMS-2S (Plus)  
 Test Time: 2022-05-02 08:58:54  
 Inspector: Chen

## IES TM-30-18 Color Rendition Report

### Product Information

Product Category: SL1-1

Product Number: 131



Condition: Tx:33.3°C, Ti:0.0°C, R.H.:60%  
 Test Lab: Optical Engineering Department  
 Operator: Chen

Test Device: Inventfine CMS-2S (Plus)  
 Test Time: 2022-05-02 08:58:54  
 Inspector: Chen